

## Power LSA— L-Type Solar Array

### Product Description



System Product Model	LSA-3K-FAB
Total Weight (KGS)	370
Type of Array Base	FAB
Solar Array Capacity (Pmax / kWp)	2.52 (2~3)
Type of Solar Module (W)	630 x4 (550-750)
String Inverter (kW)	1 x2 /Micro
Bracket (Number of Module per Sheet)	4 x1
Total Unfolded Footprint (L*W*H/m)	5.5*2.3*1.2
Occupied Area of Whole System (m²)	12.7 (5.5*2.3)
Complete Unfolding Time (mins)	45+15
Complete Folding Time (mins)	10
Installation Persons	2
Qty. per Container 20GP (pcs)	25
Qty. per Container 40HQ (pcs)	60

System Product Model	LSA-3K-FIX
Total Weight (KGS)	350
Type of Array Base	FIX
Solar Array Capacity (Pmax / kWp)	2.52 (2~3)
Type of Solar Module (W)	630 x4 (600-650)
String Inverter (kW)	1 x2 /Micro
Bracket (Number of Module per Sheet)	4 x1
Total Unfolded Footprint (L*W*H/m)	5.5*2.3*1.2
Occupied Area of Whole System (m²)	12.7 (5.5*2.3)
Complete Unfolding Time (mins)	15
Complete Folding Time (mins)	10
Installation Persons	2
Qty. per Container 20GP (pcs)	12
Qty. per Container 40HQ (pcs)	28

## Power MSA— M-Type Solar Array

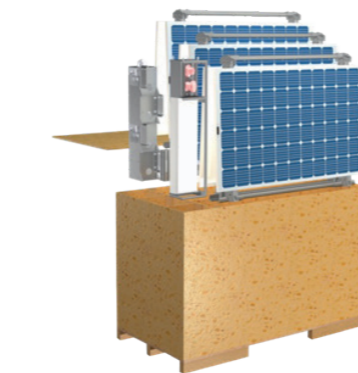
### Product Description



System Product Model	MSA-8K-FLD
Total Weight (KGS)	800
Type of Array Bracket	FLD x1
Bracket (Number of Module per Sheet)	4 x4
Solar Array Capacity (Pmax / kWp)	7.68 (7~10)
Type of Solar Module (W)	480 x16 (480-520)
String Inverter (kW)	2 x4 /Micro
Total Unfolded Footprint (L*W*H/m)	8*4.73*0.8
Occupied Area of Whole System (m²)	37.8 (8*4.73)
Complete Unfolding Time (mins)	30
Complete Folding Time (mins)	15
Installation Persons	2
Qty. per Container 20GP (pcs)	23
Qty. per Container 40GP (pcs)	47

## Power CFA— Container Foldable Array

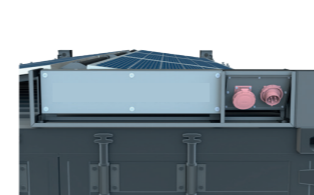
### Product Description



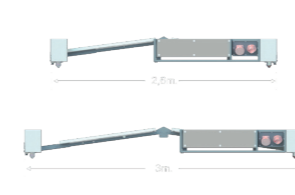
EASY ASSEMBLY



ISO TWISTLOCK



PLUG & PLAY



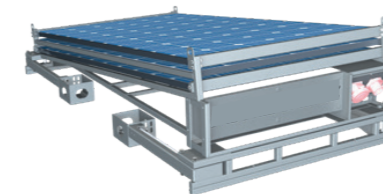
ONE FITS ALL

The Power CFA (Container Foldable Array) is the most flexible OUT OF THE BOX solar solution for the roof of containerised space incl. accommodation and welfare units. The ONE FITS ALL Design enables easy installation on different container sizes. The robust ISO-Corners will still allow the entire container to be lifted through the Power CFA whilst connected. The BASIC version consists of the flexible frame and preassembled PV panels. The COMBI version also includes micro-inverters as well as the wiring string which can be combined with the complete Plug&Play FLEX version. A total of up to 5 COMBI can be combined with a FLEX to form a multiple container solution.

Solar Power	from 2,25 kWp
Connectable	yes / Flex & Combi
Feeding	into the existing power grid or no grid feeding function
Power Connection	CEE 32A 400V input/output
Locking	ISO-Twistlock
Dimensions Standard	6060 x 2440 x 280 mm
Abmessungen Teleskopiert	6060 x 3000 x 280 mm
Dimensions Transport Box	2.158 x 1090 x 1.405mm
Total Weight	approx. 400 kg
Crain Able	yes / with Container up to 5 t
Monitoring	via App

## Power CSA— Container Slide Array

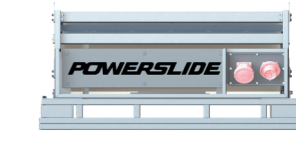
### Product Description



EASY TRANSPORT



FAST ASSEMBLY



PLUG & PLAY



10" CONTAINER & STAND ALONE

The Power CSA (Container Slide Array) is a flexible solar power solution for the roofs of containerised space incl. accommodation and welfare units - especially for 10 foot size containers. The compact slideout design allows for cost-effective transport as well as easy and fast assembly. The BASIC version consists of the foldable frame construction and the pre-assembled PV panels. The COMBI version also includes micro-inverters as well as the wiring string which can be combined with the complete Plug&Play FLEX version. A total of up to 5 COMBI can be combined with a FLEX to form a multiple container solution. The Power S is also suitable as a STAND ALONE solar system with ground anchoring option or can be mounted on a trailer as a mobile PV system.

Solar Power	from 1,65 kWp
Connectable	yes / Flex & Combi
Feeding	into the existing power grid or no grid feeding function
Power Connection	CEE 32A 400V input/output
Locking	Flexlock System
Dimensions Standard	3450 x 2440 x 650 mm
Dimensions Transport	1300 x 2440 x 650 mm
Total Weight	approx. 230 kg
Monitoring	via App



**Electrical Performance (STC: AM 1.5, 1000W/m², 25°C)**

Module Type	ST-F-420AC
Maximum Power (Pmax / W)	420 (210*2)
Power Tolerance	± 3%
Maximum Power Voltage (Vm / V)	50.8
Maximum Power Current (Im / A)	8.37
Open Circuit Voltage (Voc / V)	59
Short Circuit Current (Isc / A)	8.83
Module Efficiency (%)	22.1
MicroInverter	Maysun400
MPPT Voltage Range(V)	28-55
Startup Voltage(V)	20
Single-Phase Grid Type	120V/230V

[更多参数>>More parameters](#)

**Electrical Performance (STC: AM 1.5, 1000W/m², 25°C)**

Module Type	ST-F-150DC
Maximum Power (Pmax / W)	150 (75*2)
Power Tolerance	± 3%
Maximum Power Voltage (Vm / V)	12.0
Maximum Power Current (Im / A)	6.26
Open Circuit Voltage (Voc / V)	14.0
Short Circuit Current (Isc / A)	6.60
Module Efficiency (%)	22.4
MicroInverter	HC2420
MPPT Voltage Range(V)	12/24
Startup Voltage(V)	20
Single-Phase Grid Type	50V (stop charging, < 45V recovery)

[更多参数>>More parameters](#)

**Electrical Performance (STC: AM 1.5, 1000W/m², 25°C)**

Module Type	ST-F-250AC
Maximum Power (Pmax / W)	250 (125*2)
Power Tolerance	± 3%
Maximum Power Voltage (Vm / V)	15.0
Maximum Power Current (Im / A)	8.38
Open Circuit Voltage (Voc / V)	17.6
Short Circuit Current (Isc / A)	8.92
Module Efficiency (%)	22.6
MicroInverter	Maysun300
Rated Output Power(Wp)	295
Maximum Input Voltage(V)	60
Maximum Input Current(A)	10

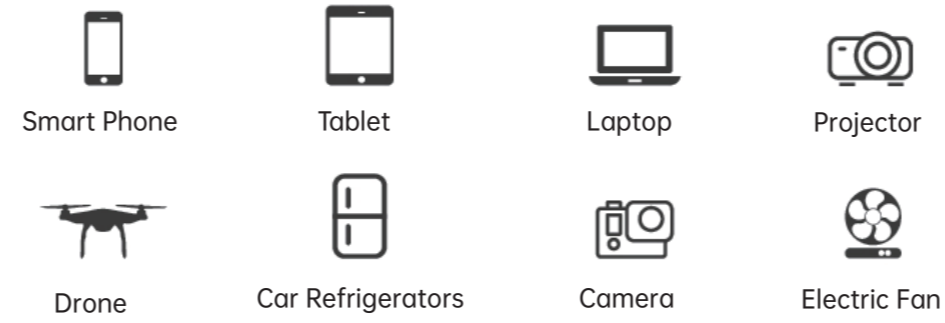
[更多参数>>More parameters](#)

**Electrical Performance (STC: AM 1.5, 1000W/m², 25°C)**

Module Type	ST-F-100DC
Maximum Power (Pmax / W)	100 (50*2)
Power Tolerance	± 3%
Maximum Power Voltage (Vm / V)	12.0
Maximum Power Current (Im / A)	4.17
Open Circuit Voltage (Voc / V)	14.1
Short Circuit Current (Isc / A)	4.44
Module Efficiency (%)	22.4
PWM Controller	HC2410
System Voltage(V)	12/24
Rated Current(A)	10
Maximum input voltage of PV(V)	50V (stop charging, < 45V recovery)

[更多参数>>More parameters](#)

**Support Device:**



Model	PB1000	PB2000
Built-in Battery	High Quality LiFePo4 1024Wh (32000mAh/3.2V)	High Quality LiFePo4 2048Wh (64000mAh/3.2V)
Input Charging Port	XT60	XT60
Mains Charging	110V/220V(1000W)/1.2H	110V/220V(1000W)/2.5H
Solar Panel Input	12~48V DC Max 500W	12~48V DC Max 500W
Car Input Charging	12~24V DC	12~24V DC
Output Rated Voltage	100~120V AC, 220~240V AC	100~120V AC, 220~240V AC
Output Rated Frequency	50Hz / 60Hz ± 3Hz	50Hz / 60Hz ± 3Hz
Rated Output Power	1600W(110V)/1800W(220V)	2400W(110V/220V)
2*DC	Total 12V18A / 200W Max ( DC5525 ) Shared With Cigar Lighter	Total 12V18A / 200W Max ( DC5525 ) Shared With Cigar Lighter
USB-A Port	4*USB-A QC3.0 18W	4*USB-A QC3.0 18W
Type-C Port	2*Type-C ( 100W / 22.5W )	2*Type-C ( 100W / 22.5W )
Product Size ( mm )	447*234*239 mm	483*301*301 mm

Model	PB300	PB400	PB500	PB600
Built-in Battery	LiFePo4	LiFePo4	LiFePo4	LiFePo4
Capacity	7200mAh 230.4Wh	10800mAh 345.6Wh	13000mAh 481Wh	14500mAh 536.5Wh
Mains Charging	12~30V DC	12~30V DC	12~30V DC	12~30V DC
Solar Panel Input				
Car Input Charging				
Output Rated Voltage	110V/220V	110V/220V	110V/220V	110V/220V
Output Rated Frequency	50Hz / 60Hz ± 3Hz	50Hz / 60Hz ± 3Hz	50Hz / 60Hz ± 3Hz	50Hz / 60Hz ± 3Hz
Rated Output Power	500W	500W	600W	600W
1*DC	DC5525*1 (same as input) 13V 10A	DC5525*1 (same as input) 13V 10A	DC5525*1 (same as input) 13V 10A	DC5525*1 (same as input) 13V 10A
USB-A Port	3*USB-A QC3.0 18W	3*USB-A QC3.0 18W	3*USB-A QC3.0 18W	3*USB-A QC3.0 18W
Type-C Port	1*Type-C ( 22.5W )	1*Type-C ( 22.5W )	1*Type-C ( 22.5W )	1*Type-C ( 22.5W )
Product Size ( mm )	250*177*177 mm	447*234*239 mm	447*234*239 mm	447*234*239 mm

# Power KIT Series

Version:2024 V2.0

